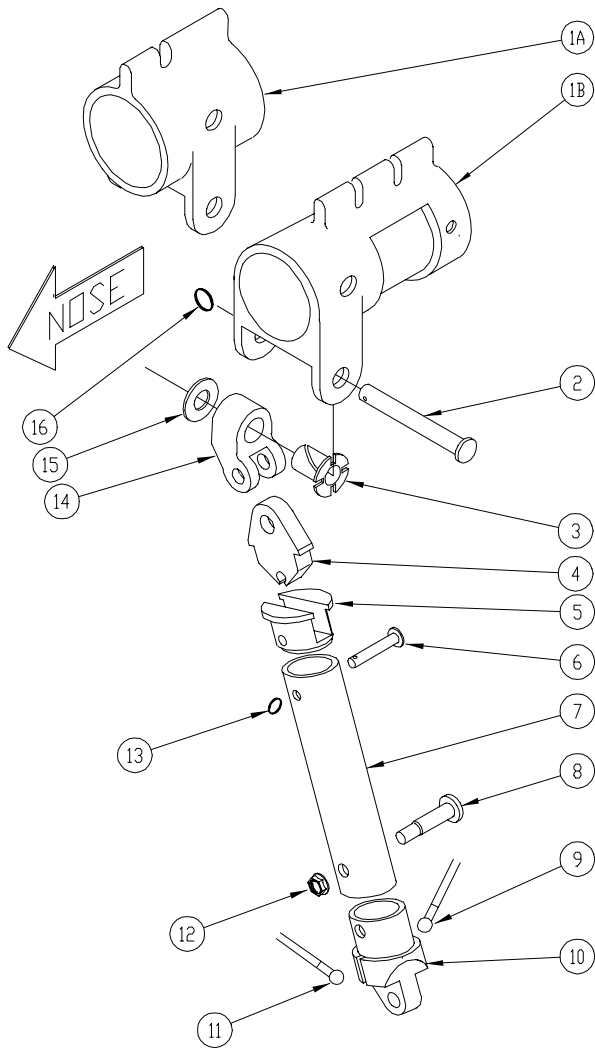


# HP AT, Sport AT, Spectrum, SuperSport Assembly Diagrams Table of Contents

---

<u>Drawing ID</u>	<u>Drawing Description</u>	<u>Page No</u>
57E01-0	AT Round Control Bar .....	2
57E02-0	AT Streamline Control Bar .....	3
57E03-0	AT Noseplate Assembly .....	4
57E05-0	AT Crossbar Center Assembly .....	5
57E09-0	AT Kingpost Assembly .....	6
57E10-0	AT Kingpost Hangloop Assembly .....	7
57E11-0	HP AT Kingpost Bridle Compensator Assembly .....	8
57E04-0	AT Crossbar-Leading Edge Assembly .....	9
57E06-0	HP AT Crossbar Center Assembly .....	10
57E07-0	AT Rear Leading Edge, Rear Keel, Sail Plug .....	11
57E08-0	AT Washout Tip Assembly .....	12
57E12-0	HP AT VG Assembly .....	13



REFER TO "AT STREAMLINE CONTROL BAR" DIAGRAM  
DOCUMENT ID 57-E02-0 FOR PARTS NOT LISTED

ID	PART NO	DESCRIPTION	QNT
1A	20G-1611	BRACKET AT KEEL CNTR SPEC/SUPR	1
1B	20G-1601	BRACKET AT KEEL CNTR HP SPORT	1
2	10G-3590	CLEVIS PIN MS20392-4C59	1
3	10T-5114	BUSH SPLIT HEADED AT CB LONG	2
4	20G-1411	REPLACED BY 20G-1412	2
5	15J-1401	INSERT CBAR LEG ROUND TOP AT	2
6	10G-1370	CLEVIS PIN MS20392-2C37	2
8	10C-5171	BOLT NAS 623-4-17	2
9	40P-3301	RIBBON 1.5 MIL-T-5038 TP3 CLR	1
10	20G-1401	REPLACED BY 20G-1402	2
11	40P-3201	RIBBON 1.5 MIL-T-5038 TP3 CLR	1
12	10N-1740	CLINCH NUT 1/4 MS21042-4	2
13	10P-1100	SAFETY RING AN 9491 SMALL	2
14	20G-1701	CBAR ELBOW AT TOP ROUND	2
15	10U-5125	WASHER NYLON .75 * .316 * .020	1
16	10P-1300	SAFETY RING MEDIUM THICK	1
<b>CONTROL BAR OPTIONS DEPENDING ON SIZE AND MODEL</b>			
7	40G-1220	RIBBON 1.5 MIL-T-5038 TP3 CLR	2
	40G-1230	RIBBON 1.5 MIL-T-5038 TP3 CLR	
	40G-1240	RIBBON 1.5 MIL-T-5038 TP3 CLR	

	ROUND CONTROL BAR OPTION GUIDE		
	AT62	AT65	AT68
SPORT AT 150	X	X	
SPORT AT 167		X	
SPORT AT 180			X
SPECTRUM 144	X	X	
SPECTRUM 165		X	
SUPER SPORT 143	X	X	
SUPER SPORT 153		X	
SUPER SPORT 163			X

**WILLS WING**

500 BLUERIDGE AVE • ORANGE • CA • 92665 • PH/FAX (714) 998-6359 / 998-0647

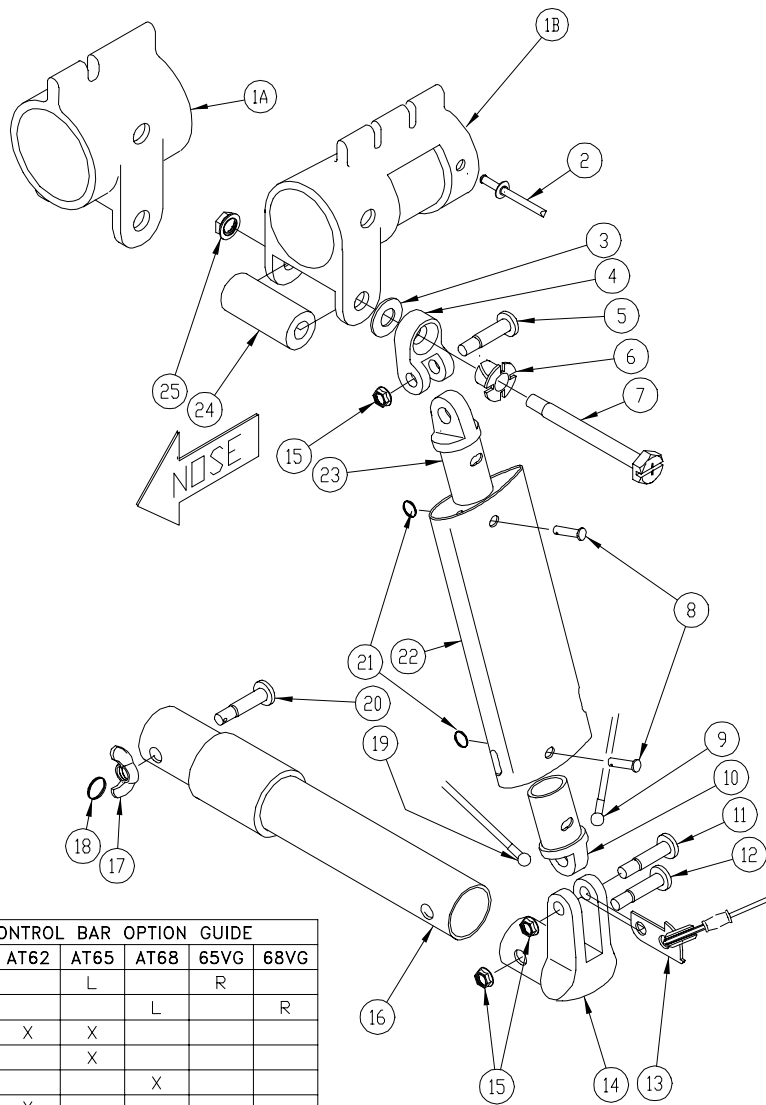
TITLE:

AT ROUND CONTROL BAR

DOCUMENT ID:  
57-E01-0

DWG ID:  
ISO\_AT.DWG

DRAWN:  
REV 6/94 sp



STREAMLINE CONTROL BAR OPTION GUIDE					
	AT62	AT65	AT68	65VG	68VG
HP AT 145		L		R	
HP AT 158			L		R
SPORT AT 150	X	X			
SPORT AT 167		X			
SPORT AT 180			X		
SPECTRUM 144	X				
SPECTRUM 165		X			
SUPER SPORT 143	X	X			
SUPER SPORT 153		X			
SUPER SPORT 163			X		

NOTE: SUPINE GLIDERS MAY TAKE ONE SIZE SMALLER

ID	PART NO	DESCRIPTION	QNT
1A	20G-1611	BRACKET AT KEEL CNTR SPEC/SUPR	1
1B	20G-1601	BRACKET AT KEEL CNTR HP SPORT	1
2	10R-0366	RIVET AL 3/16 * .375 CHAAPQ6-4	2
3	10U-5125	WASHER NYLON .75 * .316*.020	2
4	20G-1711	CBAR ELBOW AT TOP STREAM	2
5	10C-5111	BOLT NAS 623-4-11	2
6	10T-5113	BUSH SPLIT HEADED AT CB SHORT	2
7	10A-3272	BOLT AN5-27A GROUND & SLOTTED	1
8	10G-1330	CLEVIS PIN MS20392-2C33	4
9	40P-3301	WIRE SET BOTTOM REAR BALL SWDG	1
* 10	20G-1423	CBAR PLUG AT LEG BOT STR TOEIN	2
11	10C-5121	BOLT NAS 623-4-12	2
12	10C-5171	BOLT NAS 623-4-17	1
* 13	40P-3103	WIRE BOTTOM SIDE 3/32 AT STYLE	2
14	20G-1801	CBAR BRACKET AT BASETUBE END	2
15	10N-1740	CLINCH NUT 1/4 MS21042-4	3
17	10N-1440	WINGNUT 1/4 AN350-4	1
18	10P-1200	SAFETY RING AN R2 LARGE	1
19	40P-3201	WIRE SET BOTTM FRONT BALL SWDG	1
20	10C-5181	BOLT NAS 623-4-18	1
21	10P-1100	SAFETY RING AN 9491 SMALL	1
* 23	20G-1433	CBAR PLUG AT LEG TOP STR TOEIN	2
24	10T-1133	SPACER AL .5 * .095 * 1.42	1
25	10N-1750	CLINCH NUT 5/16 MS21042-5	1
<b>CONTROL BAR LEG OPTIONS DEPENDING ON SIZE AND MODEL</b>			
22	40G-1320	LEG AT 62 STREAMLINE	2
	40G-1321	LEG AT 62 STREAMLINE SUPINE	
	40G-1330	LEG AT 65 STREAMLINE SLEEVED	
	40G-1332	LEG AT 65 VG STREAMLND SLEEVED	
	40G-1333	LEG AT 65 STREAMLN SLVD SUPINE	
	40G-1334	LEG AT 65 VG STRMLN SLVD SUPIN	
	40G-1340	LEG AT 68 STREAMLINE SLEEVED	
	40G-1341	LEG AT 68 VG STREAMLND SLEEVED	
<b>CONTROL BAR BASE OPTIONS DEPENDING ON SIZE AND MODEL</b>			
16	40F-1320	BASE TUBE AT 62 STRAIGHT	1
	40F-1321	BASE TUBE AT 62 SPEEDBAR	
	40F-1325	BASE CPLT ASSY AT62 FOLD NO BR	
	40F-1330	BASE TUBE AT 65 STRAIGHT	
	40F-1331	BASE TUBE AT 65 SPEEDBAR	
	40F-1335	BASE CPLT ASSY AT65 FOLD NO BR	
	40F-1340	BASE TUBE AT 68 STRAIGHT	
	40F-1341	BASE TUBE AT 68 SPEEDBAR	
	40F-1345	BASE CPLT ASSY AT68 FOLD NO BR	

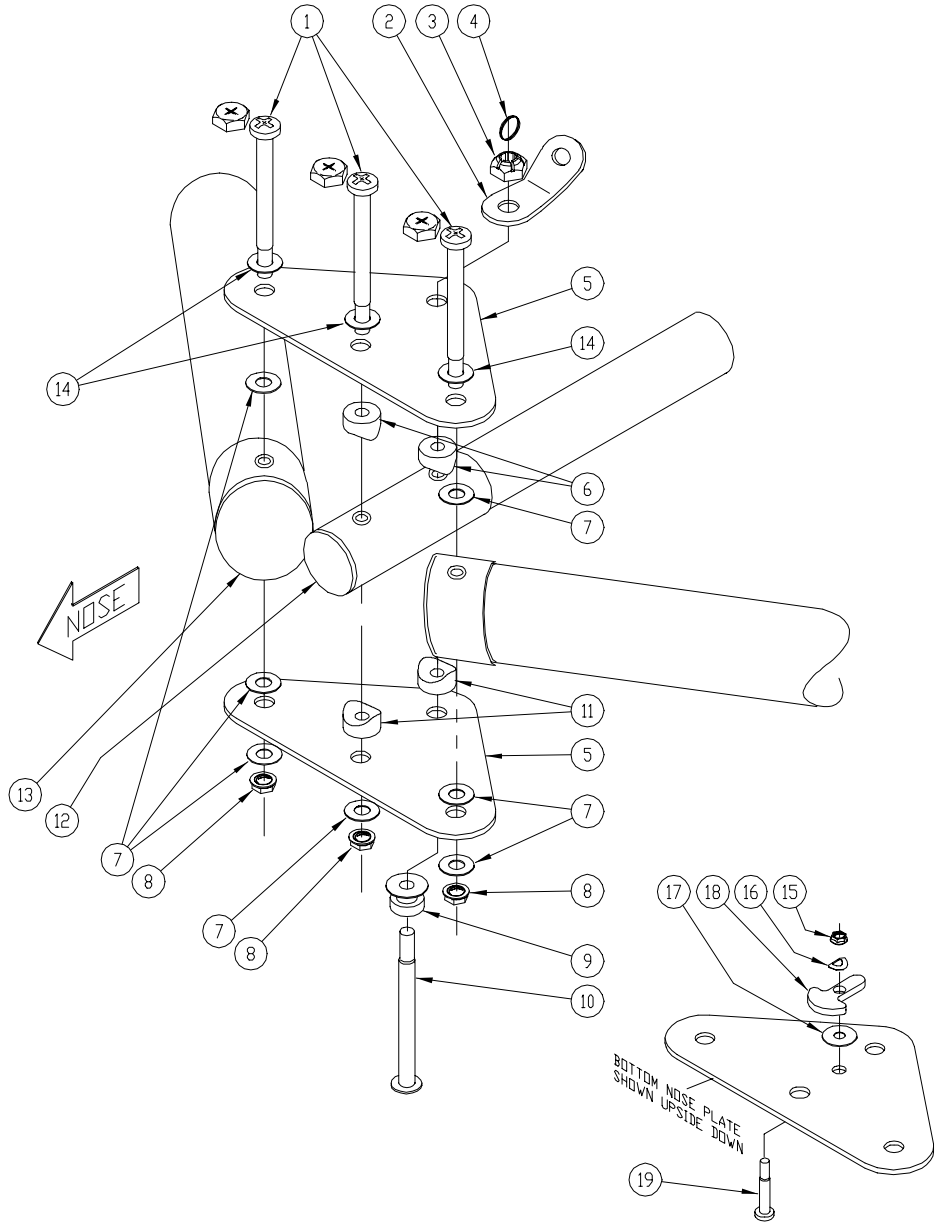
\*NOTE: PLEASE READ TECH BULLITENS TB930802 AND TB931101 BEFORE ORDERING ITEMS 10,13 OR 23 FOR GLIDERS ASSEMBLED BEFORE 8/94  
ITEM 16: REFER TO DIAGRAM 72-E0-1 FOR FOLDING BASETUBE ASSY



500 BLUERIDGE AVE • ORANGE • CA • 92665 • PH/FAX (714) 998-6359 / 998-0647

TITLE: AT STREAMLINE CONTROL BAR

DOCUMENT ID: 57-E02-0	DWG ID: ISD_AT.DWG	DRAWN: REV 6/94 sp
--------------------------	-----------------------	-----------------------



ID	PART NO	DESCRIPTION	QNT
<b>COMMON PARTS - ALL MODELS</b>			
2	40P-2301	WIRE TOP FRONT BALL SWEDG 3/32	1
3	10N-1340	CASTLE NUT 1/4 AN310-4	1
4	10P-1100	SAFETY RING AN 9491 SMALL	1
5	20C-1611	NOSEPLATE HARRIER THRU CURRENT	2
7	10U-1141	WASHER STEEL AN960-416L	7
8	10N-1740	CLINCH NUT 1/4 MS21042-4	3
9	20G-2901	COLLAR KEYHOLE TANG BOLT	1
12	15B-1612	ENDCAP 1 3/4 .049	1
15	10N-1730	CLINCH NUT 3/16 MS20142-3	1
16	10U-8010	WASHER WAVE KEYHOLE ANCHOR	1
17	10U-5093	WASHER NYLON .560* .192* .015	1
18	20C-1501	SAFETY ALUM KEYHOLE ANCHOR	1
19	10L-1061	SCREW PAN 3/16 MS35207-263	1
<b>50mm LEADING EDGE</b>			
1	10C-5381	BOLT NAS 623-4-38	3
6	15F-1404	STAND-OFF 1/4	2
11	15F-1404	STAND-OFF 1/4	2
10	10B-2523	BOLT AN24-52 GROUND / KEYHOLE	1
13	15B-2012	ENDCAP 2 .049	1
<b>60mm LEADING EDGE w/INNERSLEEVE REIN AT NOSE</b>			
1	10A-2301	BOLT AN4-30A	3
6	15F-1404	STAND-OFF 1/4	2
11	15F-1608	STAND-OFF 1/2	2
10	10B-2633	BOLT AN24-63 GROUND / KEYHOLE	1
13	15B-2399	ENDCAP 2 3/8 POLY RED	1
14	10U-1140	WASHER STEEL AN960-416	3
<b>60mm LEADING EDGE w/62mm OVERSLEEVE REIN AT NOSEPLATE</b>			
1	10A-2301	BOLT AN4-30A	3
6	15F-1607	STAND-OFF 7/16	2
11	15F-1607	STAND-OFF 7/16	2
10	10B-2633	BOLT AN24-63 GROUND / KEYHOLE	1
13	15C-6219	ENDCAP 62mm OD 58.2 ID	1

	LEADING EDGE DIAMETER AT NOSE		
	52mm LE	60mm LE	62mm LE
HP AT 145		X	X
HP AT 158		X	X
SPORT AT 150	X		
SPORT AT 167	X		
SPORT AT 180	X		
SPECTRUM 144	X		
SPECTRUM 165	X		
SUPER SPORT 143	X		
SUPER SPORT 153		X	X
SUPER SPORT 163		X	X

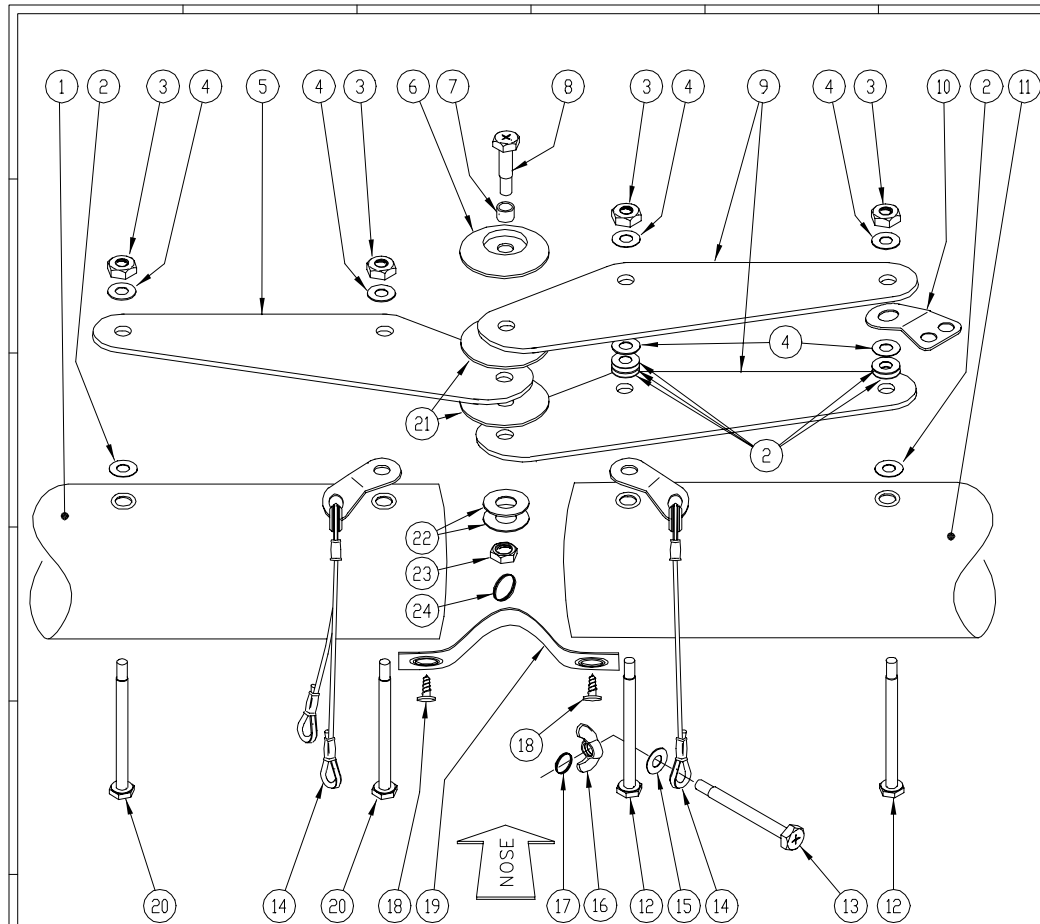


500 BLUERIDGE AVE • ORANGE • CA • 92665 • PH/FAX (714) 998-6359 / 998-0647

TITLE:

AT NOSEPLATE ASSY

DOCUMENT ID: 57-E03-0	DWG ID: ISO_AT.DWG	DRAWN: REV 6/94 sp
--------------------------	-----------------------	-----------------------



POSSIBLE XBAR CONFIGS FOR DIAG 57-E05

	60mm or 62mm XB	66mm or 2-1/4 XB	62mm XB 2-1/2 XB
HP AT 145	X	X	
HP AT 158	X	X	
SPORT AT 150	X		
SPORT AT 167	X		
SPORT AT 180		X	
SPECTRUM 144	X		X
SPECTRUM 165	X		X
SUPER SPORT 143	X		
SUPER SPORT 153	X	X	
SUPER SPORT 163	X	X	

ID	PART NO	DESCRIPTION	QNT
<b>COMMON PARTS - ALL MODELS</b>			
2	10U-1140	WASHER STEEL AN960-416	6
3	10N-1240	LOCKNUT LOWPRD 1/4 AN364-4	4
4	10U-1141	WASHER STEEL AN960-416L	5
5	20C-1732	XBAR PLATE SPORT &FF THICK .19	1
6	15J-1801	DOME WASHER XBAR CENTER POLYC	1
9	20C-1731	XBAR PLATE SPORT &FF THIN .125	2
10	20E-2302	TANG 3 HOLE BENT	1
13	10A-2270	BOLT AN4-27	1
14	40P-4203	WIRE XBAR SWEEP SET LEFT & RT	1
15	10N-1940	PUSHNUT 1/4 INCH	1
16	10N-1440	WINGNUT 1/4 AN350-4	1
17	10P-1200	SAFETY RING AN R2 LARGE	1
18	10L-1161	SCREW PAN #10 SS .5 DAL CBAR	2
19	45K-1301	XBAR STRAP-WEBBING W/GROMMETS	1
21	10U-5240	WASHER NYLON 1.50 * .250 * .02	2
23	10N-1740	CLINCH NUT 1/4 MS21042-4	1
24	10P-1100	SAFETY RING AN 9491 SMALL	1
<b>ALL MODELS EXCEPT HP AT</b>			
7	10T-3101	BUSH 4130 .313 * .028 * .725	1
8	10A-2110	BOLT AN4-11	1
22	10U-1150	WASHER STEEL AN960-516	2
<b>60mm OR 62mm CROSSBAR</b>			
1	15A-1311	XBAR BOOT 62 LEFT INNER	1
11	15A-1313	XBAR BOOT 62 RIGHT INNER	1
12	10A-2321	BOLT AN4-32A	2
20	10A-2301	BOLT AN4-30A	2
<b>66mm OR 2-1/2in CROSSBAR</b>			
1	15A-1311	XBAR BOOT 62 LEFT INNER	1
11	15A-1313	XBAR BOOT 62 RIGHT INNER	1
12	10A-2331	BOLT AN4-33A	2
20	10A-2311	BOLT AN4-31A	2
<b>2-1/4in CROSSBAR</b>			
1	15A-1301	XBAR BOOT 60 LEFT INNER	1
11	15A-1303	XBAR BOOT 60 RIGHT INNER	1
12	10A-2311	BOLT AN4-31A	2
20	10A-2271	BOLT AN4-27A	1



500 BLUERIDGE AVE • ORANGE • CA • 92665 • PH/FAX (714) 998-6359 / 998-0647

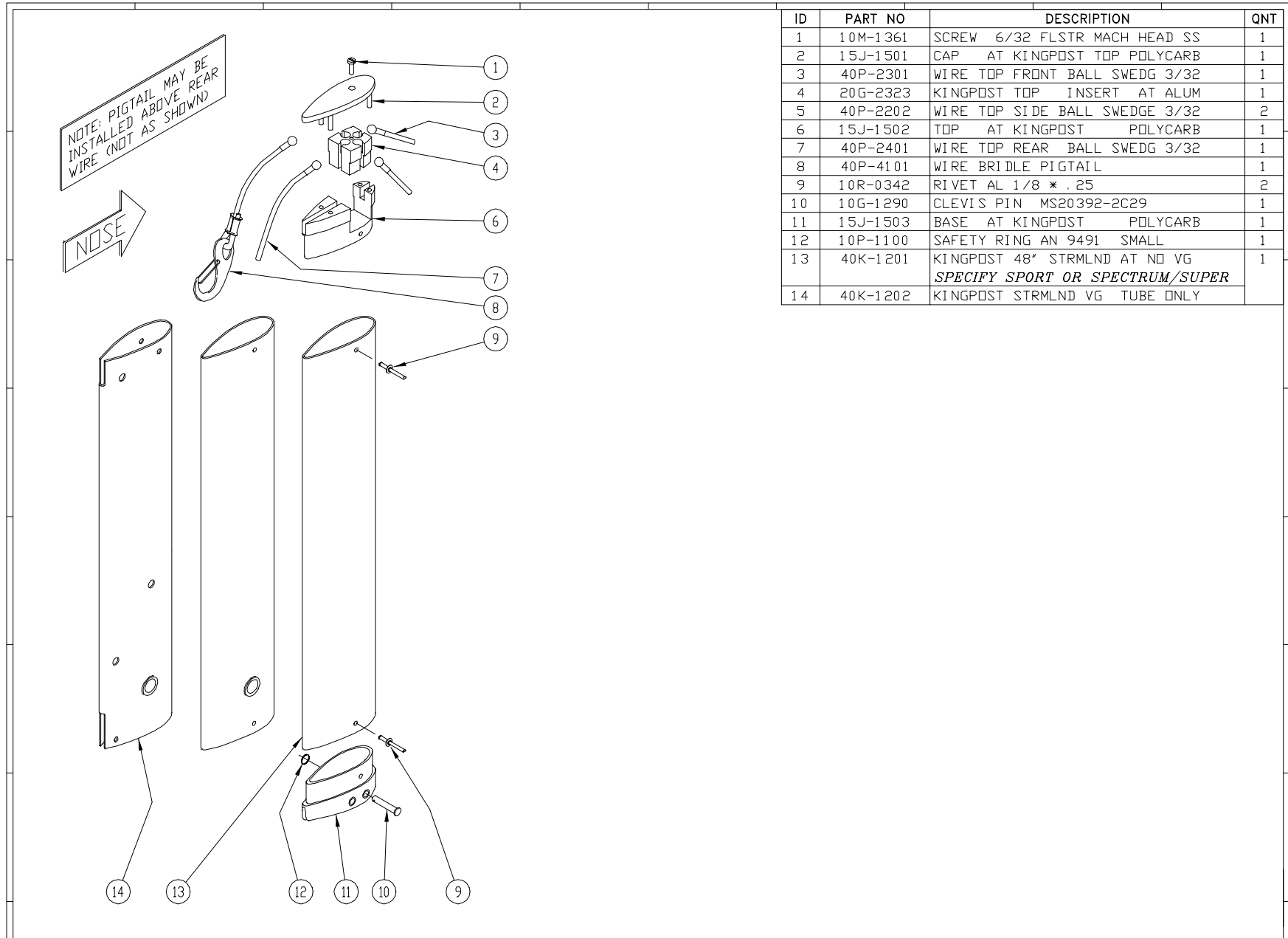
TITLE:

AT XBAR ASSEMBLY

DOCUMENT ID:  
57-E05-0

DWG ID:  
ISD\_AT.DWG

DRAWN:  
REV 6/94 sp



ID	PART NO	DESCRIPTION	QNT
1	10M-1361	SCREW 6/32 FLSTR MACH HEAD SS	1
2	15J-1501	CAP AT KINGPOST TOP POLYCARB	1
3	40P-2301	WIRE TOP FRONT BALL SWEDG 3/32	1
4	20G-2323	KINGPOST TOP INSERT AT ALUM	1
5	40P-2202	WIRE TOP SIDE BALL SWEDGE 3/32	2
6	15J-1502	TOP AT KINGPOST POLYCARB	1
7	40P-2401	WIRE TOP REAR BALL SWEDG 3/32	1
8	40P-4101	WIRE BRIDLE PIGTAIL	1
9	10R-0342	RIVET AL 1/8 * .25	2
10	10G-1290	CLEVIS PIN MS20392-2C29	1
11	15J-1503	BASE AT KINGPOST POLYCARB	1
12	10P-1100	SAFETY RING AN 9491 SMALL	1
13	40K-1201	KINGPOST 48" STRMLND AT NO VG <i>SPECIFY SPORT OR SPECTRUM/SUPER</i>	1
14	40K-1202	KINGPOST STRMLND VG TUBE ONLY	

**WILLS WING**

500 BLUERIDGE AVE • ORANGE • CA • 92665 • PH/FAX (714) 998-6359 / 998-0647

TITLE:

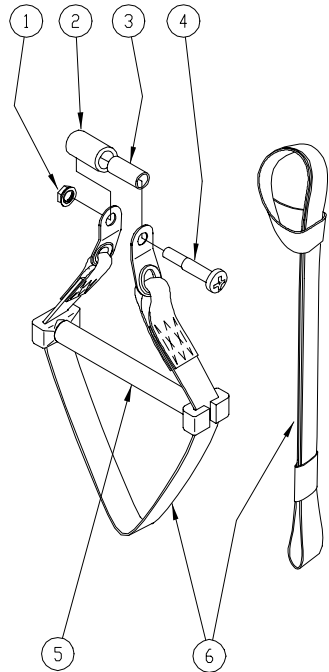
AT KINGPOST HANG ASSY

DOCUMENT ID:  
57-E09-0

DWG ID:  
ISO\_AT.DWG

DRAWN:  
REV 6/94 sp

ID	PART NO	DESCRIPTION	QNT
1	10N-1740	CLINCH NUT 1/4 MS21042-4	1
2	10T-5131	BUSH NYLON .420 * .316 * 1.0	1
3	10T-1121	SPACER AL .313 * .028 * 1.075	1
4	10C-5191	BOLT NAS 623-4-19	1
5	20G-2811	SPREADER BAR AT KINGPOST HANG	1
6	45J-1400	HANG LOOP SET - KINGPOST CUST	1
<i>or</i>	45J-1401	HANG LOOP SET - KINGPOST STK	
<i>or</i>	45J-1402	HANG LOOP SET - KINGPOST STK DHV	



**WILLS WING**

500 BLUERIDGE AVE • ORANGE • CA • 92665 • PH/FAX (714) 998-6359 / 998-0647

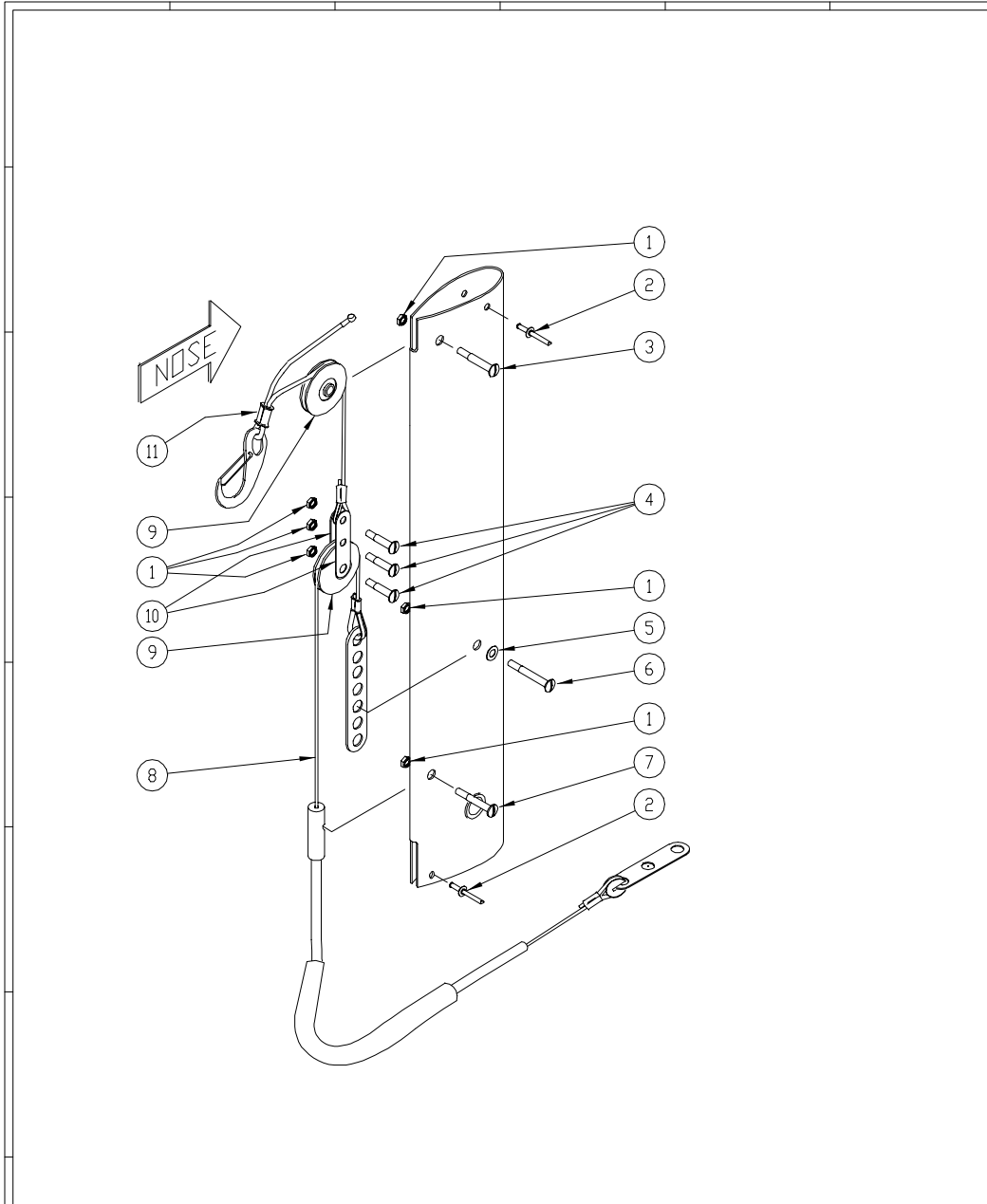
TITLE:

AT KINGPOST HANG ASSY

DOCUMENT ID:  
57-E10-0

DWG ID:  
ISO\_AT.DWG

DRAWN:  
REV 6/94 sp



ID	PART NO	DESCRIPTION	QNT
1	10N-1730	CLINCH NUT 3/16 MS20142-3	6
2	10R-0342	RIVET AL 1/8 * .25	4
3	10B-1161	BOLT AN23-16A	1
4	10B-1101	BOLT AN23-10A	3
5	10U-1130	WASHER STEEL AN960-10	1
6	10B-1201	BOLT AN23-20A	1
7	10B-1161	BOLT AN23-16A	1
8	40P-5003	WIRE VG COMPENSATOR LOWER	1
9	15K-1101	PULLEY DELRIN AN210-1A REPLACE	2
10	20E-2304	TANG 3 HOLE VG 2" LONG	2
11	40P-5002	WIRE VG COMPENSATOR UPPER	1

**WILLS WING**

500 BLUERIDGE AVE • ORANGE • CA • 92665 • PH/FAX (714) 998-6359 / 998-0647

TITLE:

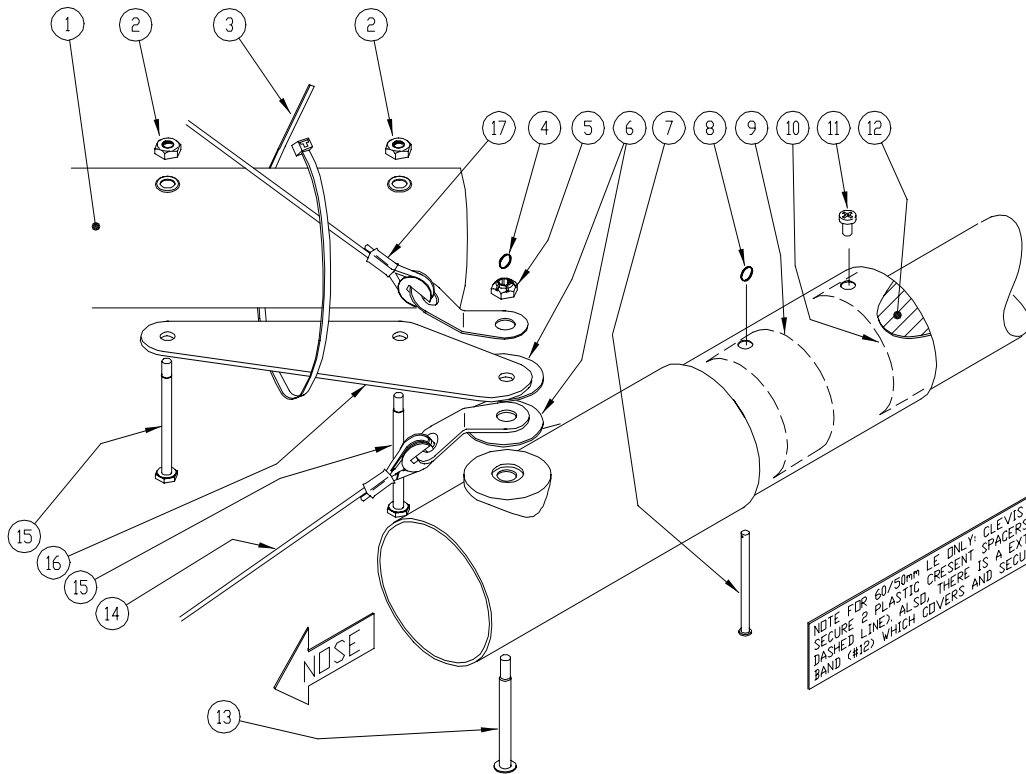
HP AT BRIDLE COMPENSATOR

DOCUMENT ID:  
57-E11-0

DWG ID:  
ISO\_AT.DWG

DRAWN:  
REV 6/94 sp





**POSSIBLE FRAME TUBING CONFIGS FOR DIAGRAM 57-E04**

	50mm LE	60mm LE	60mm or 62mm XB	66mm or 2-1/2 XB	2-1/4 XB
HP AT 145		X	X	X	
HP AT 158		X	X	X	
SPORT AT 150	X		X		
SPORT AT 167	X		X		
SPORT AT 180	X			X	
SPECTRUM 144	X		X		X
SPECTRUM 165	X		X		X
SUPER SPORT 143	X		X		
SUPER SPORT 153		X	X	X	
SUPER SPORT 163		X	X	X	

ID	PART NO	DESCRIPTION	QNT
<b>COMMON PARTS - ALL MODELS</b>			
2	10N-1240	LOCKNUT LOWPRD 1/4 AN364-4	4
3	15N-1501	ZIPTIE	2
4	10P-1100	SAFETY RING AN 9491 SMALL	2
5	10N-1340	CASTLE NUT 1/4 AN310-4	2
6	10U-5240	WASHER NYLON 1.50 * 250 * .02	4
8	10P-1100	SAFETY RING AN 9491 SMALL	2
14	40P-3103	WIRE BOTTOM SIDE 3/32 AT STYLE	2
17	40P-2202	WIRE TOP SIDE BALL SWEDGE 3/32	2
<b>60mm OR 62mm CROSSBAR</b>			
1	15A-1312	XBAR BOOT 62 LEFT OUTER	1
1	15A-1314	XBAR BOOT 62 RIGHT OUTER	1
15	10A-2271	BOLT AN4-27A	2
<b>66mm CROSSBAR</b>			
1	15A-1312	XBAR BOOT 62 LEFT OUTER	1
1	15A-1314	XBAR BOOT 62 RIGHT OUTER	1
15	10A-2301	BOLT AN4-30A	2
<b>2-1/4in CROSSBAR</b>			
1	15A-1302	XBAR BOOT 60 LEFT OUTER	1
1	15A-1304	XBAR BOOT 60 RIGHT OUTER	1
15	10A-2271	BOLT AN4-27A	2
<b>50mm/52mm LEADING EDGE</b>			
7	10G-1650	CLEVIS PIN MS20392-2C65	2
13	10B-2460	BOLT AN24-46	2
<b>60mm/62mm LEADING EDGE</b>			
7	10G-1750	CLEVIS PIN MS20392-2C75	2
9	15J-1702	CRESCENT REDUCR FWD LEFT 60/50	2
10	15J-1701	CRESCENT REDUCR AFT LEFT 60/50	2
11	10M-1251	SCREW PAN 5*8mm LE CRESCENTS	2
12	15A-1512	RUBBER SLEEVE LE CRESC SCREW	2
13	10B-2520	BOLT AN24-52	2



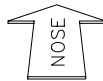
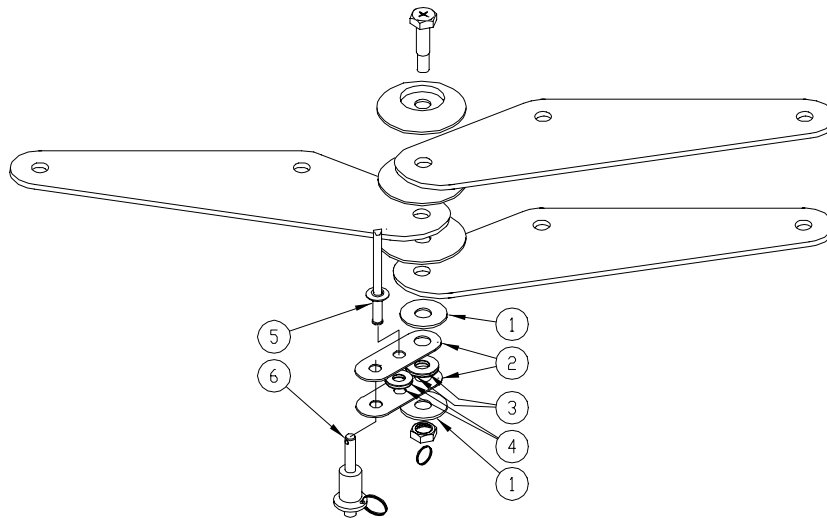
500 BLUERIDGE AVENUE • ORANGE • CA • 92665 • PH 714/998-6359 FAX 714/998-0647

TITLE: AT XB-LE ASSY

DOCUMENT ID: 57-E04-0

DWG ID: ISO\_AT.DWG

DRAWN: REV 6/94 sp



ID	PART NO	DESCRIPTION	QNT
1	10U-5124	WASHER NYLON .735* .250* .062	2
2	20E-2304	TANG 3 HOLE VG 2" LONG	2
3	10U-1140	WASHER STEEL AN960-416	2
4	10U-1130	WASHER STEEL AN960-10	2
5	10R-0366	RIVET AL 3/16 * .375 CHAAPQ6-4	1
6	10K-3030	PIN BALL LOCK #52812 VG/XBAR	1

**WILLS WING**

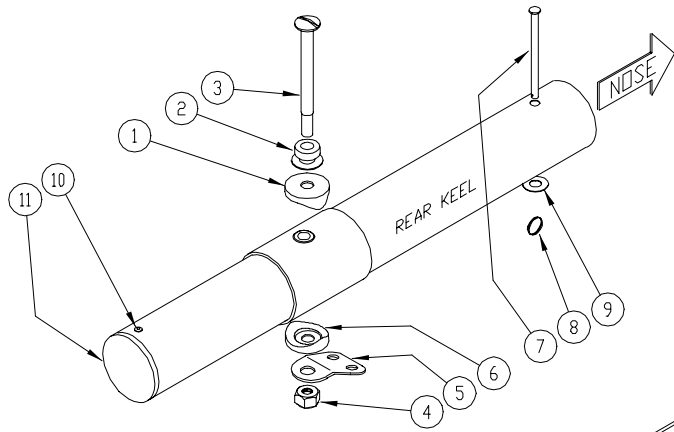
500 BLUERIDGE AVENUE • ORANGE • CA • 92665 • PH 714/998-6359 FAX 714/998-0647

TITLE: HP AT XBAR CENTER

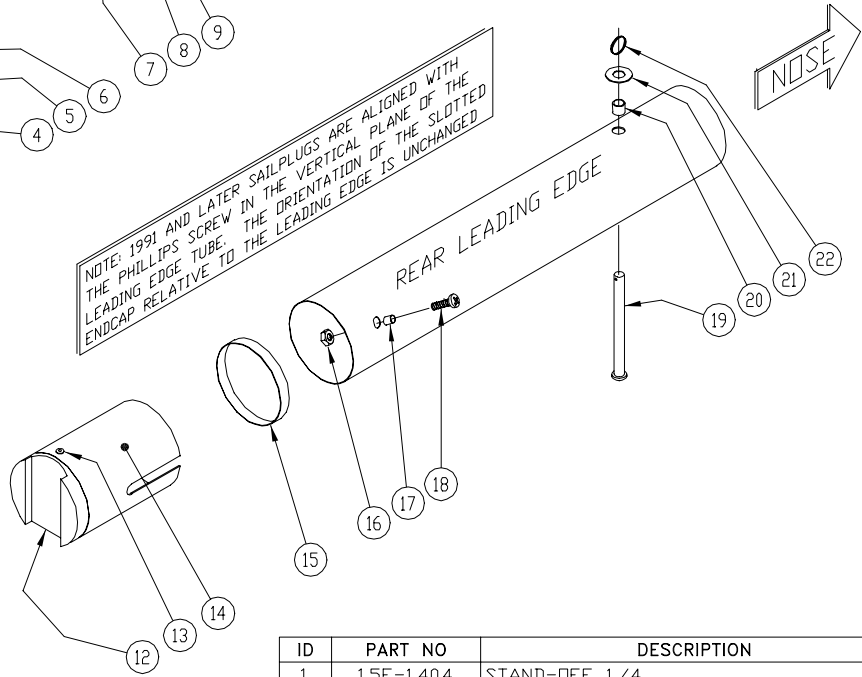
DOCUMENT ID:  
57-E06-0

DWG ID:  
ISO\_AT.DWG

DRAWN:  
REV 6/94 sp



NOTE: 1991 AND LATER SAILPLUGS ARE ALIGNED WITH THE PHILLIPS SCREW IN THE VERTICAL PLANE OF THE LEADING EDGE TUBE. THE ORIENTATION OF THE SLOTTED ENDCAP RELATIVE TO THE LEADING EDGE IS UNCHANGED



ID	PART NO	DESCRIPTION	QNT
1	15F-1404	STAND-OFF 1/4	1
2	20G-2901	COLLAR KEYHOLE TANG BOLT	1
3	10B-2464	BOLT AN24-46A GROUND/ KEYHOLE	1
4	10N-1020	LOCKNUT 1/4 AN365-428	1
5	40P-3301	WIRE SET BOTTOM REAR BALL SWDG	1
6	15F-1404	STAND-OFF 1/4	1
7	10G-1590	CLEVIS PIN MS20392-2C59	1
8	10P-1100	SAFETY RING AN 9491 SMALL	1
9	10U-1130	WASHER STEEL AN960-10	1
10	10R-0342	RIVET AL 1/8 * .25	1
11	15C-4209	ENDCAP 42mm DD 40.2 ID	1
12	15J-1901	ENDCAP SLOTTED SAIL MOUNT PC	2
13	10R-0342	RIVET AL 1/8 * .25	2
14	40M-1211	SAIL PLUG ALL 7075 MODELS 50mm	2
15	40M-1321	SHIM KIT ALL 7075 MODELS 50mm	2
16	10N-1120	NYLOCK LOWPRO 1/8 MS21083-ND6	2
17	10T-1101	SPACER AL .187 * .022 * .125	2
18	10L-1041	SCREW PAN 1/8 MS35206-228	2
19	10G-2770	CLEVIS PIN MS20392-3C77	2
20	10T-1111	SPACER AL .375 * .035 * .375	2
21	10U-1400	WASHER MS 15795-210	2
22	10P-1100	SAFETY RING AN 9491 SMALL	2

**WILLS WING**

500 BLUERIDGE AVENUE • ORANGE • CA • 92665 • PH 714/998-6359 FAX 714/998-0647

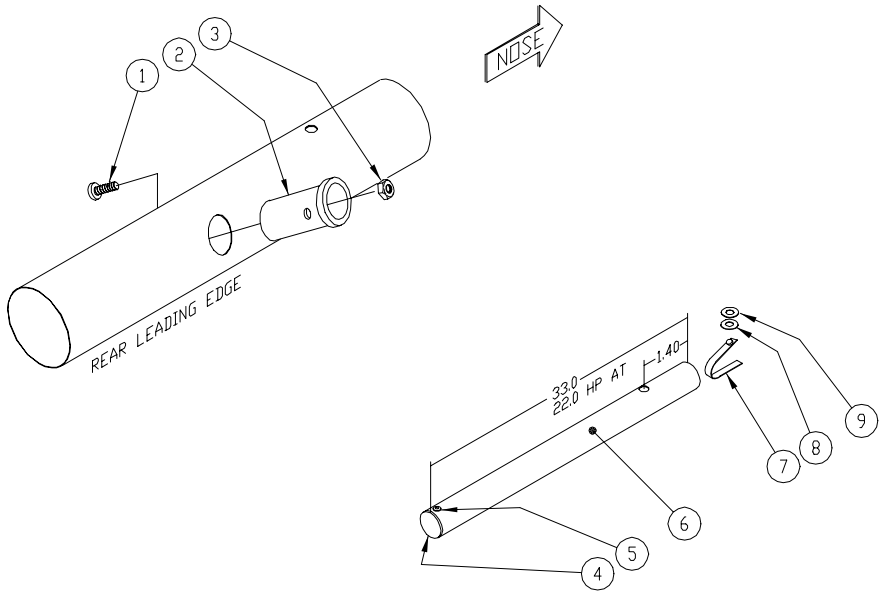
TITLE: AT REAR KEEL/LE

DOCUMENT ID: 57-E07-0

DWG ID: ISD\_AT.DWG

DRAWN: REV 6/94 sp

NOTE: 1991 AND LATER HP ATs DO NOT HAVE FIXED TIPS. DR RECEPTACLES IN THE REAR LEADING EDGE. ALSO, THE SAILPLUGS ARE ALIGNED WITH THE PHILLIPS SCREW IN THE VERTICAL PLANE OF THE LEADING EDGE. SLOTTED ENCAP ORIENTATION IS UNCHANGED.



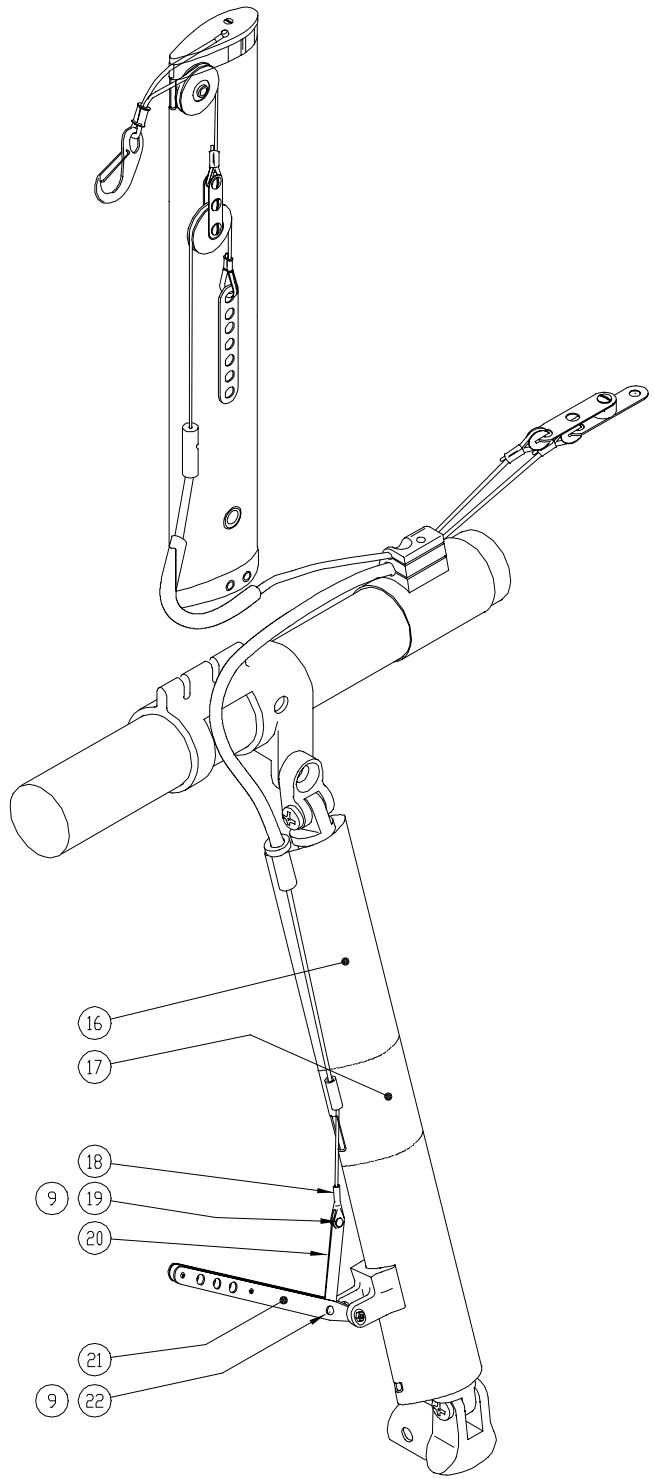
ID	PART NO	DESCRIPTION	QNT
1	10L-1061	SCREW PAN 3/16 MS35207-263	2
2	15J-1601	RECEPTACLE AT WASHOUT TIP PC	2
3	10N-1130	NYLOCK LDWPRD 3/16 MS21083-ND3	2
4	15B-0607	ENCAP 3/4 .028	2
5	10R-0342	RIVET AL 1/8 * .25	2
6	40M-1142	WASHOUT TUBE-CLIP RETAIN 7075L	2
or	40M-1143	WASHOUT TUBE-CLIP RETAIN 7075S (HP AT ONLY)	2
7	20A-1501	BUTTON SPRING SINGLE - W/D TIP	2
8	10U-1140	WASHER STEEL AN960-416	2
9	10U-1141	WASHER STEEL AN960-416L	2



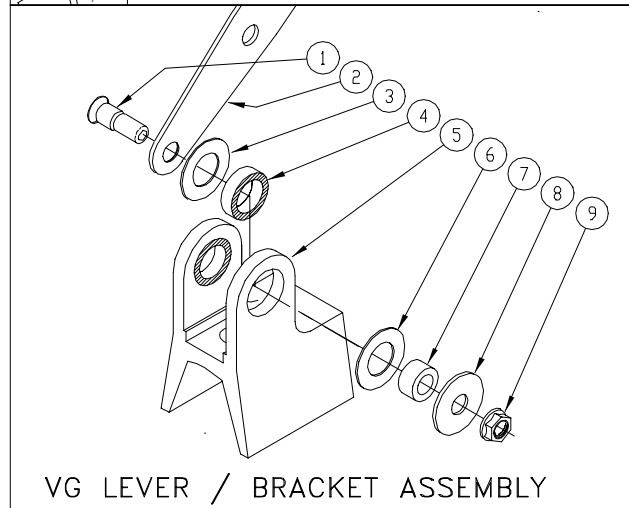
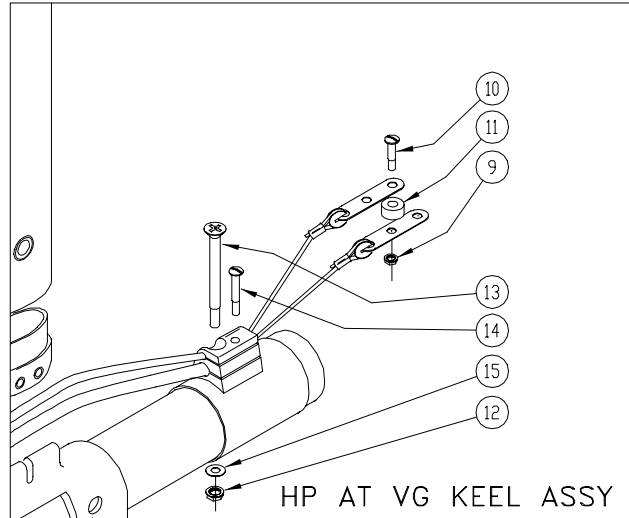
500 BLUERIDGE AVENUE • ORANGE • CA • 92665 • PH 714/998-6359 FAX 714/998-0647

TITLE: AT WASHOUT TIP ASSY

DOCUMENT ID: 57-E08-0 DWG ID: ISO\_AT.DWG DRAWN: REV 6/94 sp



ID	PART NO	DESCRIPTION	QNT
1	10K-2010	SCREW HL19PB-6-3 HI LOK	2
2	20C-1401	LEVER, VG ONE SIDE PLATE ONLY	2
3	10U-5095	WASHER NYLON .560* .320* .013	2
4	10T7101	BUSH BRONZE .439 * .313 * .130	2
5	20G-1901	BRACKET VG LEVER MOUNTING	1
6	10U-5095	WASHER NYLON .560* .320* .013	2
7	10T-4101	SPACER SS .312 * .058 * .175	2
8	10U-2093	WASHER STEEL .560* .19 * .050	2
9	10N-1730	CLINCH NUT 3/16 MS20142-3	3
10	10B-1101	BOLT AN23-10A	1
11	10T-5101	SPACER NY .75 * .125 * .310	1
12	10N-1740	CLINCH NUT 1/4 MS21042-4	1
13	10C-2301	BOLT NAS 517-4-30	1
14	10B-1201	BOLT AN23-20A	1
15	10U-1141	WASHER STEEL AN960-416L	1
16	40G-13XX	LEG AT 65/68 VG/ND VG STRM SLEEVED	2
17	15A-1501	RUBBER SLEEVE VG LEG SLOT	1
18	40P-5001	WIRE VG ACTIVATION	1
19	10L-1061	SCREW PAN 3/16 MS35207-263	1
20	20E-2402	TANG 4 HOLE VG 4.63" LONG	1
21	20C-1411	LEVER ASSY HPAT VG W/ BRACKET	1
22	10B-1101	BOLT AN23-10A	1



**WILLS WING**  
 500 BLUERIDGE AVENUE • ORANGE • CA • 92665 • PH 714/998-6359 FAX 714/998-0647

TITLE: HP AT VG	
DOCUMENT ID: 57-E12-0	DWG ID: ISD_AT.DWG
DRAWN: REV 6/94 sp	